

Full Control On Active Directory User Sessions

With SessionLimit, you can monitor all sessions in your Active Directory environment, enforce session restrictions, and enhance computer security to the highest level by adding secondary authentication to sessions.

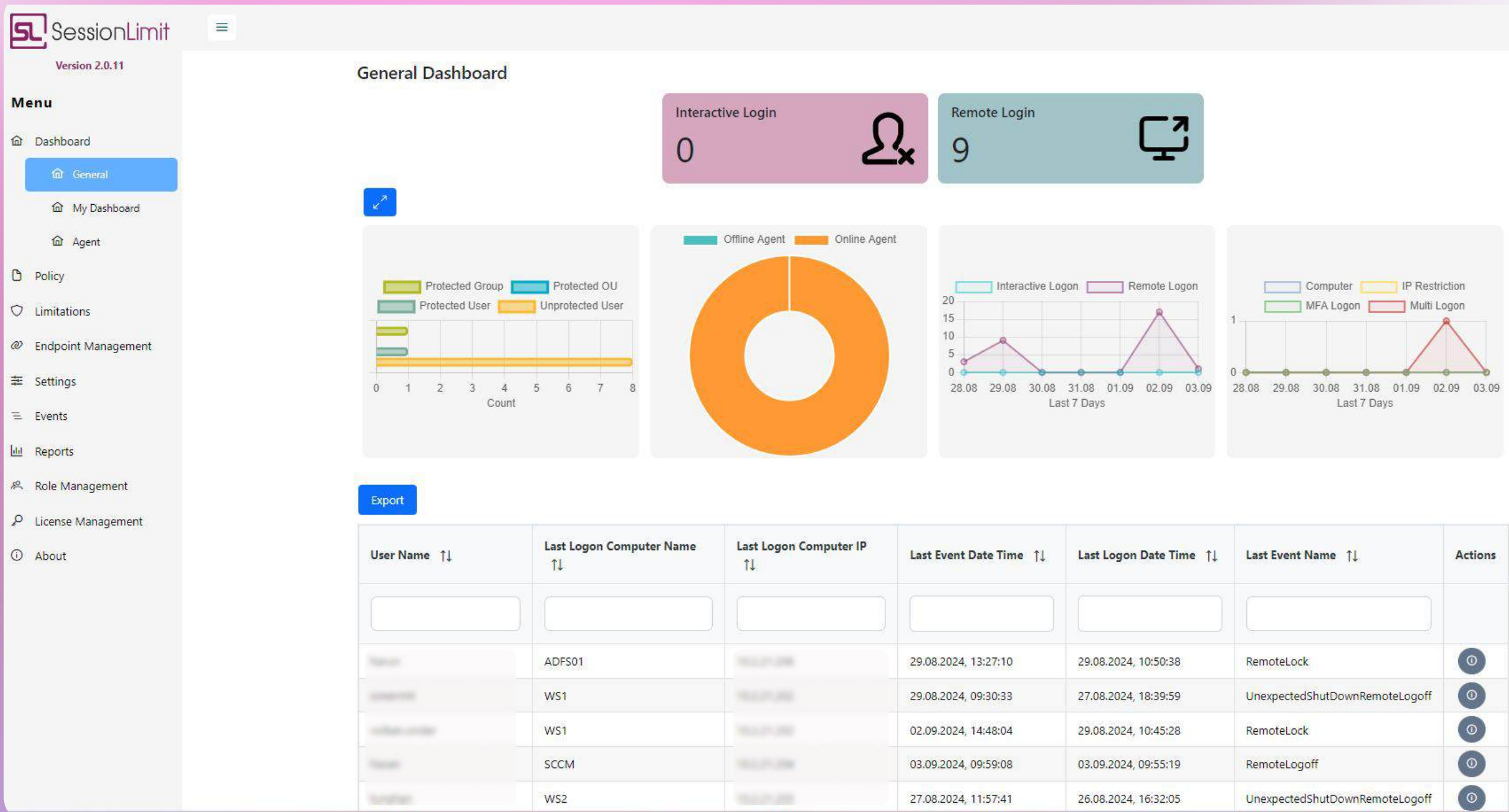
SessionLimit provides full control over session management and ensures secure user access. It protects all user logon activities in your Active Directory network, prevents concurrent sessions, records activities, and offers monitoring and reporting features.

In addition to expanding Active Directory session policies, SessionLimit enables multi-factor authentication (MFA) for local and remote desktop sessions.

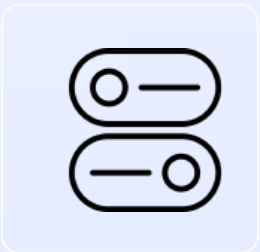
[Discover SessionLimit](#)

New Experience In User Session Control!

SessionLimit allows you to create policies for two-factor authentication (2FA) and control the number of concurrent logins. Additionally, it enables the restriction of the computers from which sessions can be initiated. This ensures that access controls and session management allow real-time monitoring of the sessions initiated from employees' computers.



Two-Factor Authentication (2FA)



Multi Log-on Control



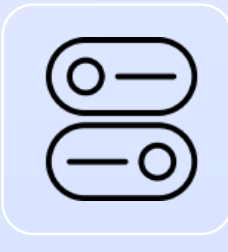
Computer Access Restrictions



IP Restriction



Multiple AD Support



Reporting

SLSessionLimit

Version 2.0.11

Menu

Dashboard

Policy

Limitations

Endpoint Management

Settings

Events

Reports

Role Management

License Management

About

Limitations

Add New User / Group

Search...Clear

| <input type="checkbox"/> | Is Protected? ↑↓ | Policy User Status ↑↓ | Policy Name ↑↓ | Group Name ↑↓ | Type ↑↓ | User / Group Name ↑↓ | FQDN ↑↓ | Actions |
|--------------------------|------------------|-----------------------|----------------|---------------|---------|----------------------|---------|---|
| <input type="checkbox"/> | Protected | Exclude | | | User | | e2p.com | <div><div></div><div></div><div></div><div></div></div> |
| <input type="checkbox"/> | Unprotected | Include | | Domain Admins | User | | e2p.com | <div><div></div><div></div><div></div><div></div></div> |
| <input type="checkbox"/> | Unprotected | Include | | Domain Admins | User | | e2p.com | <div><div></div><div></div><div></div><div></div></div> |
| <input type="checkbox"/> | Unprotected | Include | | Domain Admins | User | | e2p.com | <div><div></div><div></div><div></div><div></div></div> |
| <input type="checkbox"/> | Unprotected | Include | | Domain Admins | User | | e2p.com | <div><div></div><div></div><div></div><div></div></div> |
| <input type="checkbox"/> | Unprotected | Include | | Domain Admins | User | | e2p.com | <div><div></div><div></div><div></div><div></div></div> |
| <input type="checkbox"/> | Unprotected | Include | | Domain Admins | User | | e2p.com | <div><div></div><div></div><div></div><div></div></div> |
| <input type="checkbox"/> | Unprotected | Include | | Domain Admins | User | | e2p.com | <div><div></div><div></div><div></div><div></div></div> |
| <input type="checkbox"/> | Unprotected | Include | | Domain Admins | User | | e2p.com | <div><div></div><div></div><div></div><div></div></div> |
| <input type="checkbox"/> | Unprotected | Include | | Domain Admins | User | | e2p.com | <div><div></div><div></div><div></div><div></div></div> |
| <input type="checkbox"/> | Unprotected | Include | | Domain Admins | User | | e2p.com | <div><div></div><div></div><div></div><div></div></div> |
| <input type="checkbox"/> | Unprotected | Include | | Domain Admins | Group | Domain Admins | e2p.com | <div><div></div><div></div><div></div><div></div></div> |

Showing 1 to 10 of 11 entries <<<12>>>10

Özellikler

- Interactive and Remote Session Management and User Activity Monitoring✓
- Disabled Accounts Session Control✓
- Credential Provider✓
- Computer Restriction✓
- IP Restriction✓
- Interactive and Remote Multi-Factor Authentication (MFA)✓

